



Milesight-Troubleshooting SIP

Milesight Technology Co.,Ltd.

Camera Version	XX.7.0.66	Update	2018.8.08
-----------------------	------------------	---------------	------------------

1. What is SIP

SIP (Session Initiation Protocol) is a signaling communication protocol, which is widely used for controlling multimedia communication sessions such as voice and video calls over Internet Protocol (IP) network. The protocol defines the message that are sent between peers, which govern establishment, termination and other essential elements of a call.

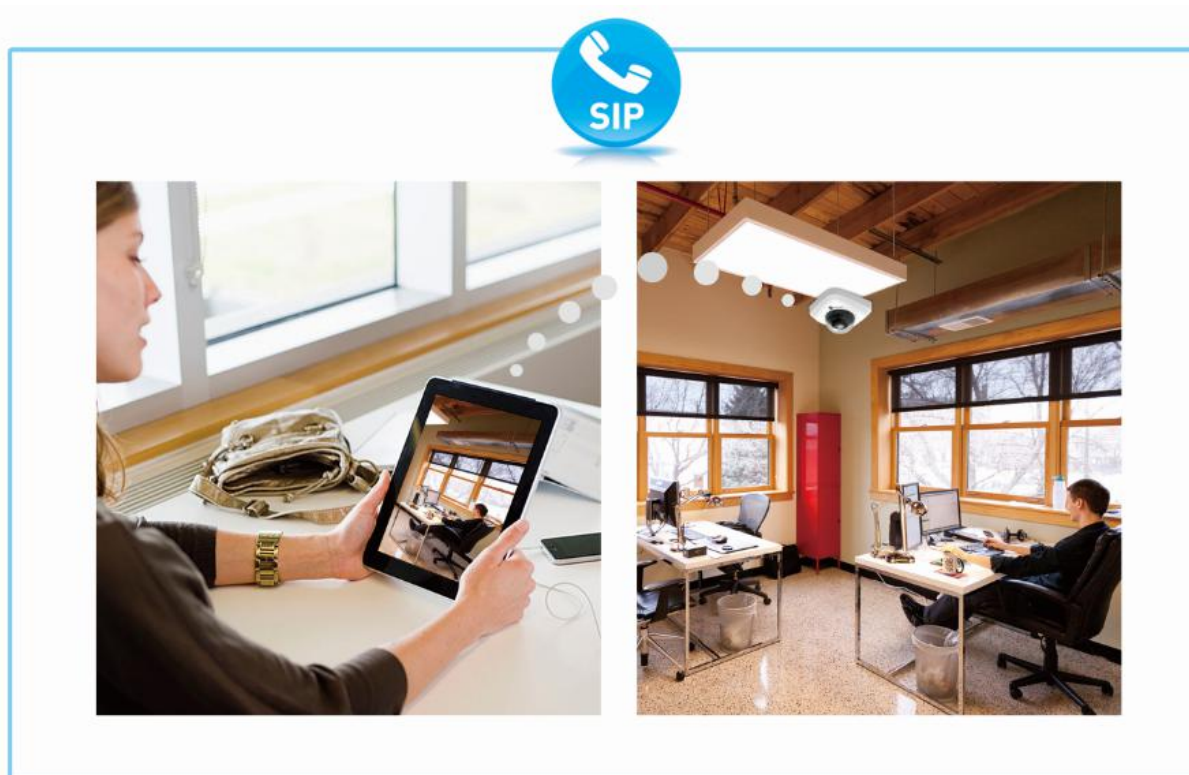


Figure 1 Communication Live View

Now the SIP machine can support the following call ways(Figure 2).



Figure 2 The Call Ways SIP Supports

2. How to Use SIP on Milesight Camera

So far, Milesight network cameras with compression H.264 are able to support SIP, for both primary stream and second stream. So please check the SIP Phone, and make sure that it supports H.264.

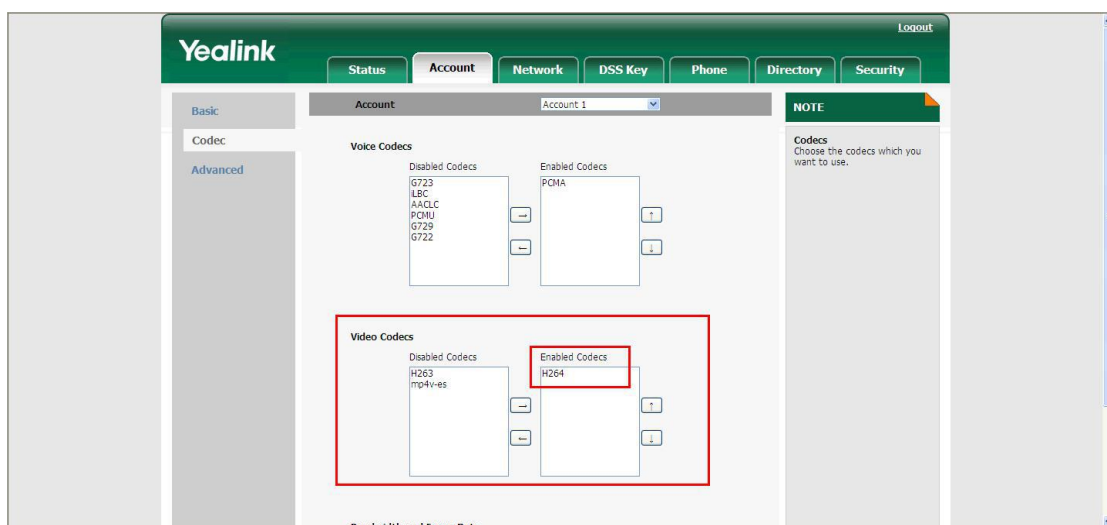


Figure 3 SIP Phone

There are two ways to call a SIP phone:

1) Register on a Server

Take MyPBX for example:

Step1: Please log in the web, and then create a new account for the camera. Input IP address 192.168.9.99 into the browser till it turns to figure 4 interface, then input the account User Name and Password to log in;

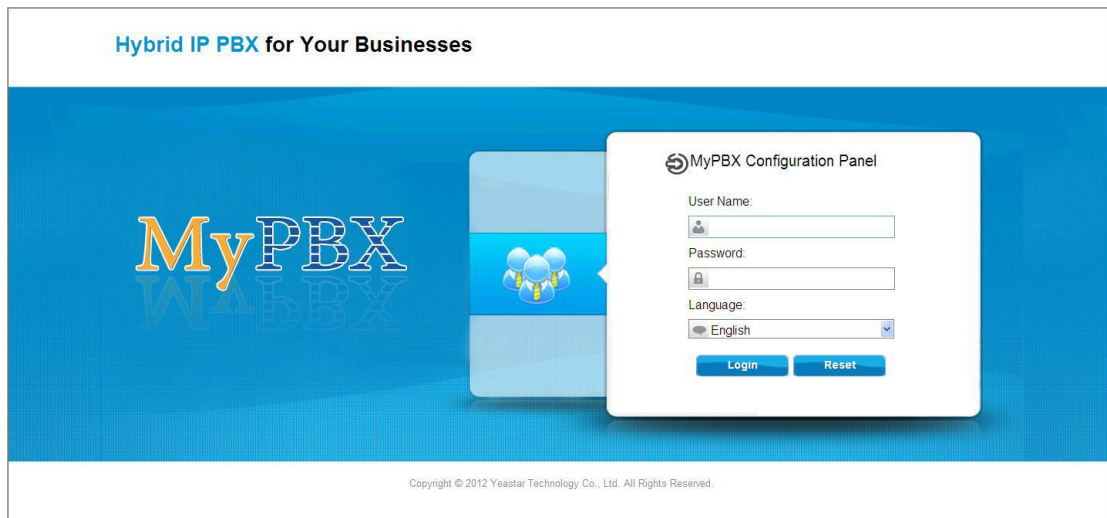


Figure 4 MyPBX

Step2: Click on the “PBX” option, choose to add a new account (figure 5);

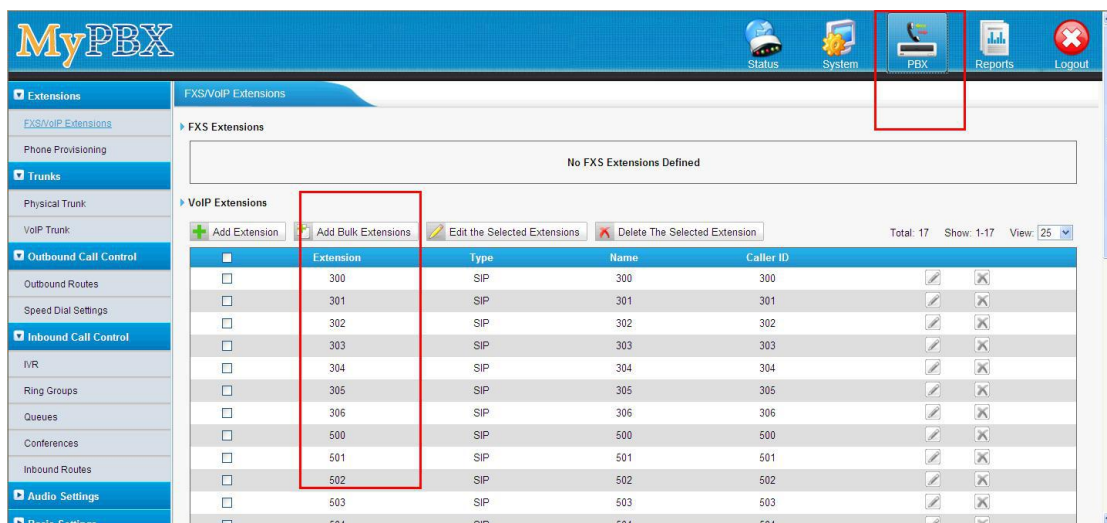


Figure 5 Add a new account

Step3: Choose to add a new extension;

Figure 6 SIP Extension

Step 4: Click “Status”→“Extension state”, we can see the account registration is successful (Figure 7).

Extension Status				
Free	Busy	Hold	Unavailable	Ring
300(SIP)	301(SIP)	302(SIP)	303(SIP)	304(SIP)
305(SIP)	306(SIP)	307(SIP)	308(SIP)	309(SIP)
310(SIP)	311(SIP)	500(SIP)	501(SIP)	502(SIP)
503(SIP)	504(SIP)	820(SIP)	821(SIP)	822(SIP)
823(SIP)	824(SIP)	870(SIP)	872(SIP)	873(SIP)
874(SIP)	878(SIP)	879(SIP)	880(SIP)	881(SIP)

Figure 7 check Register Status

Step 5: Enter the information of the account on SIP server. And if the information is correct, the status of SIP will turn to be “Registered”.

Step 6: Input your camera’s IP and log in the web page via browser. Go to “Basic Settings”→ “Video”, choose the right stream you want to use for SIP function. Then set the “Profile” to “Base” (the sip function only works in **Base** mode), then click “Save” for saving your setting.

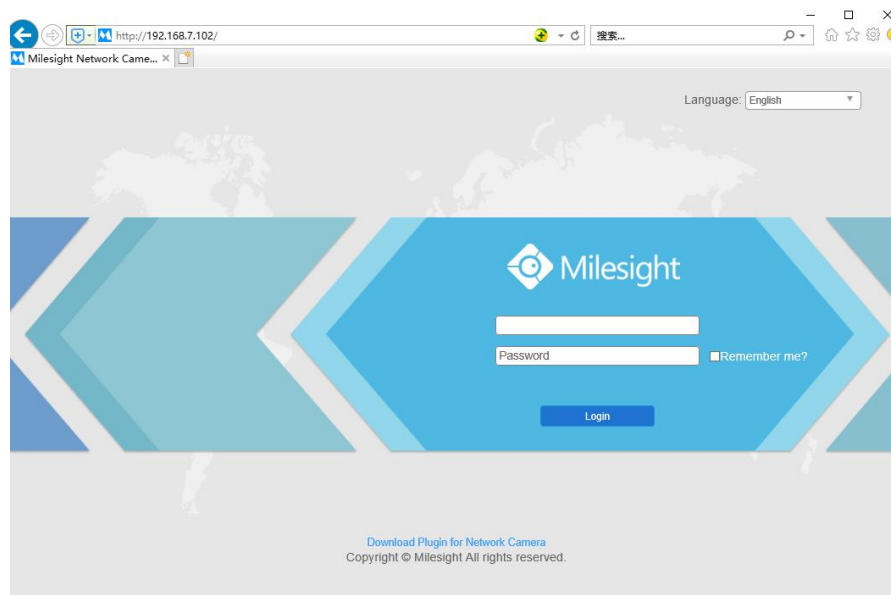


Figure 8 Log in Web Page

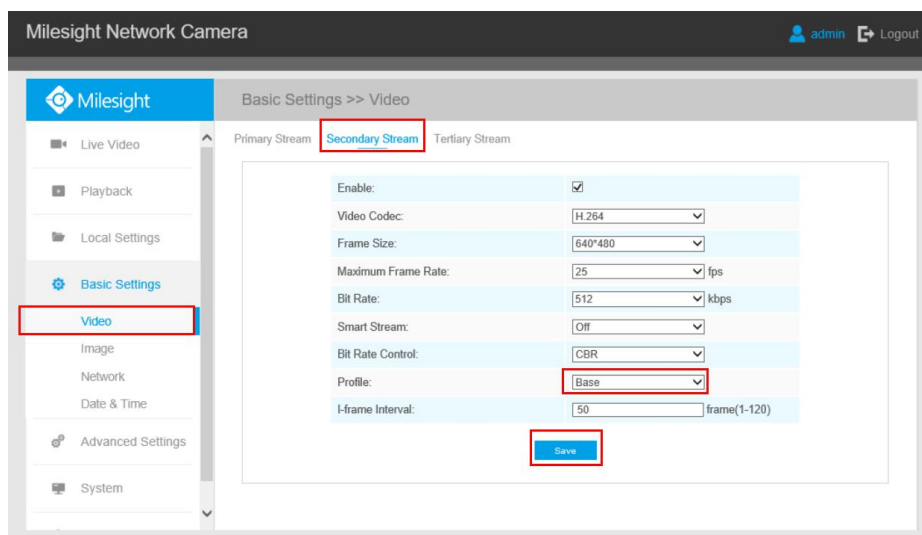


Figure 9 Set Profile Base

Step 7: Register an account for SIP devices through SIP server. Fill in the information set in Step 3, click submit to see the blue “Registered” on the top.

Registered	
Enable:	<input checked="" type="checkbox"/>
Register Mode:	Enable
User ID:	1003
User Name:	1003
Password:
Server Address:	192.168.9.101
Server Port:	5060
Connection Protocol:	UDP
Video Stream:	Secondary Stream
Max Call Duration:	1800 s (0 means no limitation.)

Note:SIP supports Direct IP call.

[Save](#)

Figure 10 Register Mode

2) Call IP Directly

Choose “Disable” mode, then you can call SIP phone via dialing IP directly.

The screenshot shows the 'SIP Settings' page in the Milesight Network Camera web interface. The page title is 'Advanced Settings >> SIP'. The left sidebar shows navigation options: Live Video, Playback, Local Settings, Basic Settings, and Advanced Settings (selected). Under 'Advanced Settings', there are sub-menus for Alarm, Storage, Security, SIP (selected), Smart Event, Logs, System, and Maintenance. The main content area shows the 'SIP Settings' form. At the top, it says 'Unregistered'. The form fields are: Enable (checked), Register Mode (Disable), User ID (500), User Name (sipclient), Password (.....), Server Address (192.168.5.101), Server Port (5060), Connection Protocol (UDP), Video Stream (Secondary Stream), and Max Call Duration (1800 s). A note at the bottom states 'Note:SIP supports Direct IP call.' and a 'Save' button is present.

Figure 11 Call IP directly

3. Telephone Alarm Settings

There are two phone types available to set when alarm is triggered:

1) Phone Number

Step1: Go to “Advanced Settings”→“SIP”→“Alarm Phone List”, choose “Phone Type”, input the number of SIP phone, and set alarm “Duration”, then click “Add”;

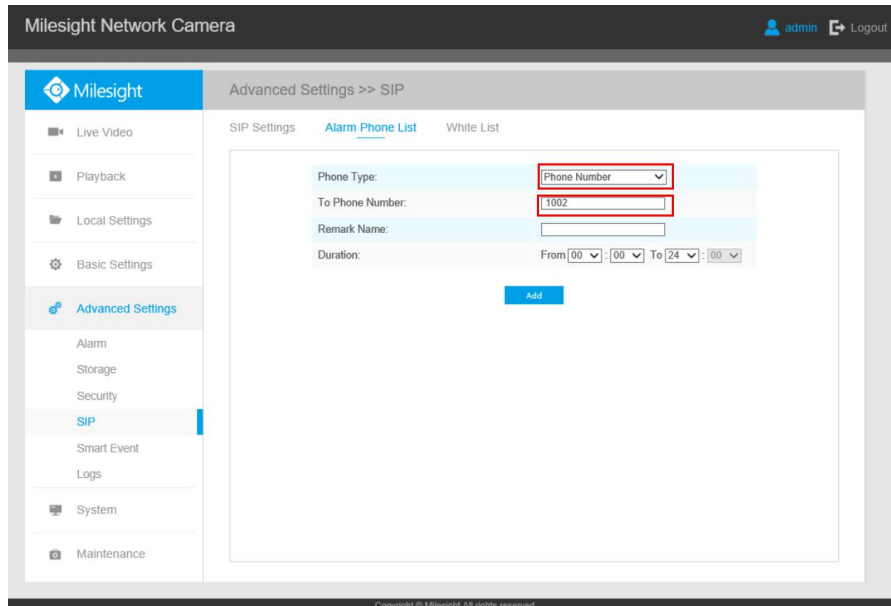


Figure 12 Add phone number

Step2: Go to “Advanced Settings”→“Alarm”, enable Motion Detection, choose “Alarm to SIP Phone”, and click “Save”;

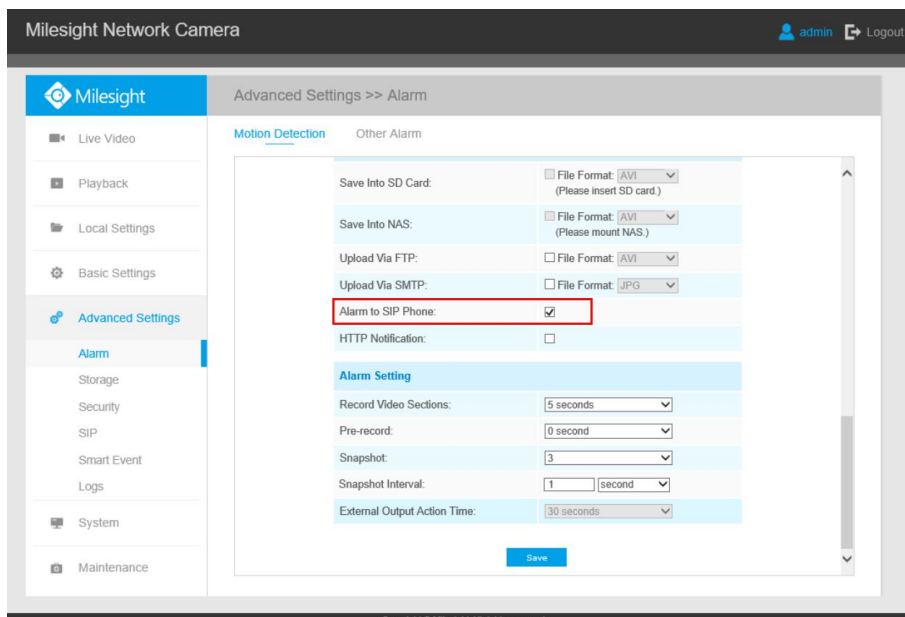


Figure 13 Alarm to sip phone

Step3: When the alarm is triggered, the camera will call SIP Phone through dialing the phone number. At the same time, we can see video images on the SIP device ;

2) Direct IP Call

Step1: “SIP”→ “Alarm Phone List”-> “Phone Type”→ “Direct IP Call” ;

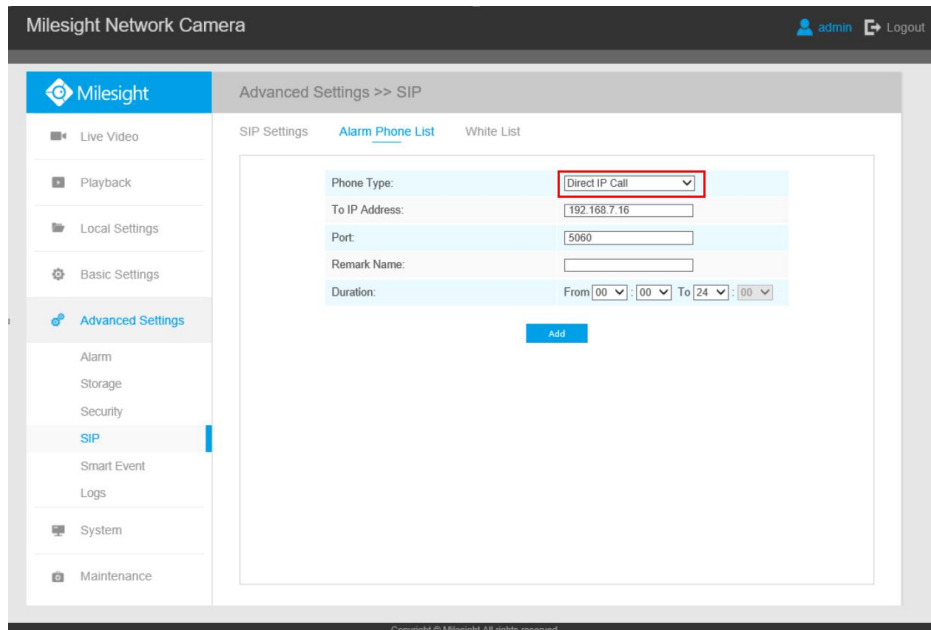


Figure 14 Set IP call

Step2: When the alarm is triggered, the camera will call SIP Phone through IP directly. At the same time, we can see video images on the SIP device .

Note:

The camera and SIP Phone should be on the same network segment, making sure that they can ping each other first.

-END-